

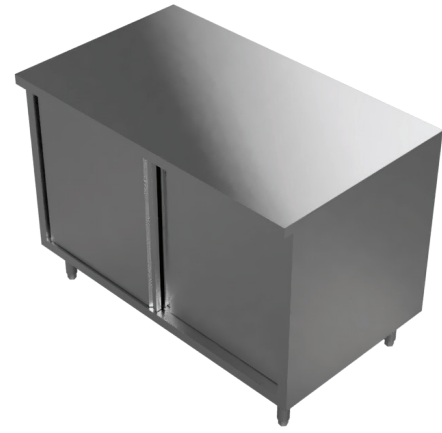


Item No.: _____
 Order No.: _____
 Qty: _____ Date: _____

FLAT TOP ENCLOSED CABINET - SLIDING DOOR

Features

- Machine mold with manual welding
- 18 gauge stainless steel
- 1-1/2" adjustable bullet foot
- All cabinets 72" and up have 6 legs
- Adjustable shelf

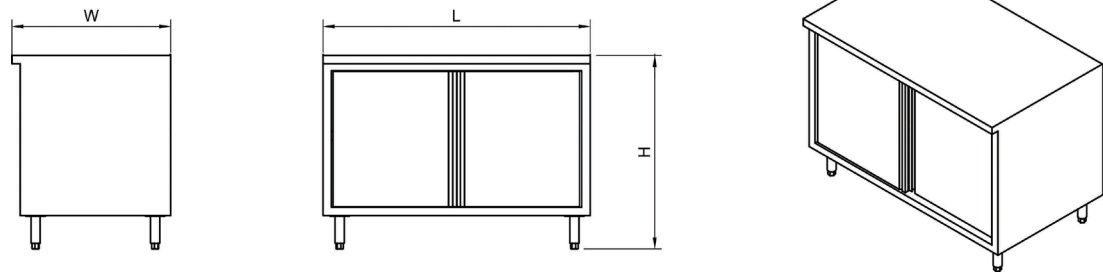


Description Flat Top Enclosed Cabinet - Sliding Door

This flat top enclosed cabinet combines a durable work surface with adjustable mid-shelf to keep mixing bowls, containers, prep supplies or even small kitchen appliances close at hand. It features a sliding door design that keeps contents safe and enclosed.

The stainless steel top provides superior corrosion resistance and durability you can count on. The 1-5/8" diameter stainless steel legs with adjustable bullet feet provide support for the whole cabinet. This added additional storage space is perfect for your commercial work setting!

Plan View CTD-3048S



Order No.	W x L x H (in)	Load Cap. (lbs)	G. W. (lbs)
CTD-2436S	24 x 36 x 35	400	115
CTD-2448S	24 x 48 x 35	420	140
CTD-2460S	24 x 60 x 35	450	165
CTD-2472S	24 x 72 x 35	480	230
CTD-3036S	30 x 36 x 35	500	122
CTD-3048S	30 x 48 x 35	520	147
CTD-3060S	30 x 60 x 35	550	172
CTD-3072S	30 x 72 x 35	580	244